

Technical Data

Fluke 961A/961B/961C Temperature Humidity Logger



Long term logging

Viewing data on

- Cold-chain transportation
- Cold storage validation
- Fresh food
- Temporary transshipment
- Refrigerators and freezers
- Ultra-low temperature storage

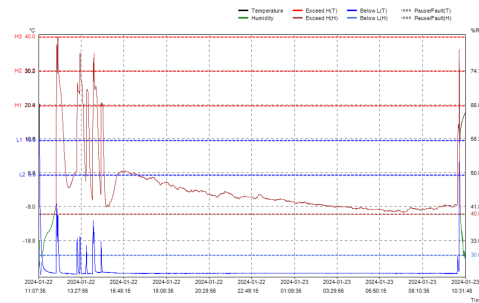
Record and read data at any time, easy to use

No additional data cable is required, by simply using the USB interface of the Fluke 961, you can easily read temperature and humidity report in PDF generated automatically, and you can also quickly export the temperature and humidity data in the Logger in the form of tables, charts, and text. Up to 32,000 sets of data for long-term logging without exporting frequently. The Fluke 961 Series Temperature Humidity Logger with USB connection is a convenient tool for monitoring temperature and humidity in food, pharmaceutical, cold-chain and cold storage industries.

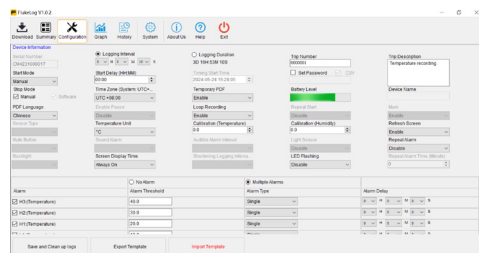
- USB interface for direct reading PDF report, no software required
- 32,000 sets of data for long-term logging
- Minimum logging interval of 10 seconds, instantaneous logging of rapid environment changes.
- FDA 21 CFR Part 11 compliant, data traceable
- Multiple formats for data export and reporting
- 1 meter drop test, IP54 ingress protection
- Compact and light, easy to record and read data at any time



Summary			
Maximum:	20.7°C / 82.0%RH	Start Time:	2024-01-22 11:07:35
Minimum:	-28.6°C / 25.4%RH	Stop Time:	2024-01-23 10:31:45 (Temporary)
Average:	-27.2°C / 45.2%RH	Duration:	23h 24m 10s
SRRT:	+13.8°C	Date Points:	8435
First Alarm (T):	2024-01-22 11:07:35	First Alarm (H):	2024-01-22 11:09:45



A temperature and humidity report generated automatically



FlukeLog desktop software for setting key parameters

Specifications

	961A	961B	961C
Detailed Specifications			
Sensor Type	Internal	External	External
Temperature Measurement			
Temperature Measurement Range	-30.0 °C to 70.0 °C	-85.0 °C to 150.0 °C	-40.0 °C to 85.0 °C
Accuracy	± 0.4 °C	±(0.3 + 0.005 x readings) °C	± 0.4 °C
Resolution	0.1 °C		
Humidity Measurement			
Range	0% to 100.0% RH	NA	0% to 100.0% RH
Accuracy	±3% RH (20 to 80% RH @ 25 °C); ±5% RH (<20% RH, >80% RH @ 25 °C)	NA	±3% RH (20 to 80% RH @25 °C); ±5% RH (<20% RH, >80% RH @ 25 °C)
Resolution	0.1%RH	NA	0.1%RH
Data Storage	32000		
Logging Interval	10 s to 24hr		
Start Mode	Press button or use PC software		
Stop Mode	Press button, use PC software or stop-when-full		
Alarm Threshold	Up to 3 upper temperature limits and 2 lower temperature limits 1 upper humidity limit and 1 lower humidity limit		
Alarm Type	Single/Cumulative		
Report Format	PDF (direct read via a PC), Excel and TXT (via PC software)		
General Specifications			
Temperature	Operating	-30 °C to 70 °C (the Logger)	
	Storage	-30 °C to 70 °C (the Logger)	
Altitude	Operating	2 000 m	
	Storage	12 000 m	
Relative Humidity	Operating	0% RH to 100% RH, non-condensing	
	Storage	<75% RH	
Power Supply	Battery type	CR2450 x 1	
	Battery Life	1 year (logging @ 15 min logging interval, 25 °C)	
Safety	IEC 610101-1, Pollution Degree 2		
Size (H x W x L)	107 mm x 47 mm x 17 mm (No external probe)		
Weight	60 g (with battery)	88 g (with battery)	78 g (with battery)
IP Rating	IEC 60529: IP65		
Electromagnetic Compatibility(EMC)	IEC 61326-1: Basic Electromagnetic Environment; CISPR 11: Group 1, Class A		

Ordering Information

Fluke 961A Temperature Humidity Logger with USB Connection

Standard Accessories:

- Fluke 961A Temperature Humidity Logger
- Mounting bracket and screws
- Velcro hook and loop fastener



Fluke 961B Temperature Logger with USB Connection

Standard Accessories:

- Fluke 961B Temperature Logger
- Mounting bracket and screws
- Velcro hook and loop fastener



Fluke 961C Temperature Humidity Logger with USB Connection

Standard Accessories:

- Fluke 961C Temperature Humidity Logger
- Mounting bracket and screws
- Velcro hook and loop fastener



Fluke. Keeping your world up and running.™
Fluke Corporation

For more information call:
From other countries +1 (425) 446-5500
Web access: <http://www.fluke.com>

©2024 Fluke Corporation. 5/2024